

€• , f „ ...† ‡ ^ 1(SUM01)%Š< Ć•  
 (Ž••' Lumi nex' " " • — —)  
 ~™Š> œ€•  
 ž™ÿ ĩ

☎ £ ¤ ¥ ¦ § ¨ © ª « ¬ ® ¯

° ±

[ 2 3 4™ ]

μ< Ć• ¶™. „ ¤• — — 1 ° Š 1 €• » ¼½» ¾½¿ ÄÁ¼½ÃÄÅÆ½ÃÇÈÉ¼ÊËÌ f „ š > Æ  
 ¤Í SUM01Î ° Ĩ

[ < Ć• ĐŃ ]

< ĆÒÓ	Ô°	< ĆÒÓ	Ô°
96ÖÖ×Ø^ ÙÚ	1	96ÖÖÛÜ	4
Ý Þ ß	2	Ý Þ ß à á Æ	1â 20mL
Ž ž	1	ä å æ ç Æ	1â 20mL
%Š è ÆA	1â 120éL	%Š à á ÆA	1â 12mL
%Š è ÆB×PE-SAU	1â 120éL	%Š à á ÆB	1â 12mL
ê Æ	1â 10mL	è ì í Æ×30â Ú	1â 20mL
ž™ÿ ĩ	1		

[ î ï ð ñ ò ó < Ć ]

1½Lumi nex MAGPIXô™ Lumi nex 100ô™ Lumi nex  
 200ô™ Ê Bio-Radó, Bio-Pl exôä ä ö × ÷ ø ù ž™ú û ú² ü, ý þ ÿ ĩ % Þ Ú  
 2½' Ê • ° Æù ó  
 3½à á ß ñ EP .  
 4½ Ê " .  
 5½Ž  
 6½ ì Æñ Ñ ù  
 7½0.01mol /L× Ê 1â Ú æ ç (PBS)™ pH=7.0-7.2  
 8½ ù  
 9½ Ý Ö ù

[ < Ć• ñ ó ³ ]

1½ ! ñ< Æ• œ" < Æ# \$< Æ%Ý&É" ' ( Ì ) \* + , - < Æ• . ) / O1 Ý Þ ß ½%ŠèÆA  
½%ŠèÆB2ó%ÖÖ( ª -203C" È 4< Æ) 5ª 43C( ð™Í  
2½ ž™. ñ< Æ• œ64< Æ7î \$8< Æ%Ý&" ' ñ9: ( Ì  
\* + œ  
< Æ• Ð Ý; <=>" \$?@î A<ä Bž™Cž™. ñ64< Æ• ÷øDEB?@. 1FGĐž™HI Ì J  
BK³ LM2• " ÉñÝ&NP" ( O³ Ð" ě ä PQ( RS¹ ñİ

[ ÝµñTUV( \_ ) ]

» ¼œ1, Uª » ¼ä Í ñW» ÝµDX9 52€LÊ43CKY" Z. 1,000âg – 20ä [ " \ É ¼ ] <"  
1É¼5ª -203CÈ-803C( " ^ \_ ` abcİ  
» ¾œ™EDTAÊd, eN, fÆTUÝµ" ý1ÝµDTU. ñ30ä [ Ðª 2-83C 1,000âg – 15ä [ " \ É ¼ ]  
<%Š" È 1É¼5ª -203CÈ-803C( " ^ \_ ` abcİ  
ĵ ÄÄ¾œ©ghi ñĵ Äĵ ðÄ¾ñk— " ©g  
1Ú\ ~ ° ĵ Äm" D² nPBS×0.01mol/L" pH=7.0-7.2ÚÍ ¼î o»Æ" Á¾úpÓqİ  
2Ú1ĵ Ärs€m" #Áñ t 5DuÉñv wxÄÄæçÆ(yz IS007" { | } Ý± ^ ñ ~ ÄÄ¹ • €  
• ©ghi ñæçÆ)ñ, f#OùÍ ×• €ñĵ Ä, ...† ‡ Úİ ×O° x ^ %o=1:20-1:50" Š†œ1mLÄÄæ  
çÆÍ < t 20-50mgĵ Ä µİ Ú  
3Ú1Æ- ñ• ŽÆ• K• ' ' " " • ¼İ  
4Ú1j ðÿñÁ¾Æ10,000âg – 5ä [ " — ~ " É ¼ ] <™ª %ŠÈ 5ª -203C™( Ì  
ÄÄÄÄÆœDä ä < @šú" ÄÄî >™2™k—' " œ  
1Úœ• ÄÄ´ ž™nPBSÝÝ¼î " Z.™ ‡ ^ ĵ Ç"ª 1,000âg – 5ä [ . , Uİ ×• £ÄÄ< x  
K – ¥ | , UÚİ  
2Ú1, U- ñÄÄ™nPBSì 3BC  
3Ú1ÄÄ™wxÄÄæçÆq• " §: N107FÄÄ/" ©" †ª î ..." ÄÄ<2« ¬• ' - ' " " èÆ• ¼İ  
4Ú1Ýµª 2-83C 1,500âg – 10ä [ " — ~ " É ¼ ] <™ª %ŠÈ 5ª -203C™( Ì  
ÄÄÇÈÉ¼ÈÈÌ š> Ýµœ) 1,000âg – 20ä [ " \ É ¼ ] <%Š" È 1É¼5ª -203CÈ-803C( " ^ \_ ` abcİ  
\* + œ  
1½2ÉÝµ#î §! ( " 43C( €ª 1®" -203C©• K1FG" -803C©• K2FGİ  
2½Ýµ" ° è»I ±²³. %Š´ª " " ‡è»Ýµ©µ« ¬†¶%Šİ  
3½Ýµž™ú´æ #, " X9" ©´ < üžšcÄİ  
4½¹ª ° ° %ŠÖ| " » ¼¼¾ž™» ¼ĵ ©R»¾eN µ« ¬%Šİ

[ Lumi nex200 ä ä ö ]

- 1. ä ä x ^ œ50uLC
- 2. • ' hi œŽ ä MagPlex;
- 3. Ä Ž ä ° œ50Ä/Ä;
- 4. MFI ÄœMedian.

[ < Æ Þ ð ]

1½ž™ú1" ñ< Æ Ýµæ #, " X9×18-253CÚ" †ª ž< Æ• D° ÄLMĐ©Äž™" ) Ç\ ^ µ  
B< @" î ñ Ý; < Æ" ý164ñ Ý; ó< Æ\$Æ¹; Ç( Ì

2 1/2 YPB (b E B) ce E % YPB < t YPB a a AE 0.5mL E y . X 9 E 5 o i 10 a [ " g L Y Y I I x ^ \_ I
DU " E e : N 10.0ng/mL I P D 7 F a a Y PB n EP " E F EP I < t 300 N L n Y PB a a AE " t O " " {
B O % a a s 10.0ng/mL, 2.5ng/mL, 0.62ng/mL, 0.16ng/mL, 0.04ng/mL, 0.01ng/mL, 0.0ng/mL Y PB a a
AE (0ng/mL) ¥ ; e N O ^ O I N ( O ? @ ' a • " E B ? @ ) z T M w n Y PB e A I

Table with 9 columns: item, 1, 2, 3, 4, 5, 6, 7, Tube. Row 1: SUMO1, 10.0, 2.5, 0.62, 0.16, 0.04, 0.01, 0, ng/mL

3 1/2 % S e A A O % S e A B ce Detection A o Detection B D z T M u ) T M O O x T M E O U - ' " " 2 z U U D
• E % E n A x - ^ - U I « T M u a Y 2 % S a a A E E B 1:100 a a ( t o e 10 N L % S e A A / 990 N L % S a a
A E ) " P a B A " a a u a | 2 p a a y n E B ? @ " i n A o a j ( 100 N L / O ) " ? a a j L ' a j 0.1-0.
2mL I

4 1/2 e i i A e e 580mL E " < t 20mL i A e x 30 a U a a " 600mL " a e A e : I
\* + o e

1 1/2 YPB n a a A A ¥ ; D O I « - I

2 1/2 YPB ) a « T M u 15 a [ D a j I z Y PB a e A z T M o B I

3 1/2 YPB 1/2 % S e A A a e A 1/2 % S e A B a e A ) z T M f ' n a a A a j " a a A O A B T M I T M A e Y Y e e
P a B A " ^ \_ I D I N ( O ? @ ' a n P Q . ) z T M . o " y P . o A e U I ) { | " i n o e Q a
j " / o @ ... z T M . o a j n k - x t \ % S e A E L " o B @ ... e a 10 N L U " 2 ^ \_ e s e : i i I

4 1/2 ) i q a z T M i • a a K n Y PB 1/2 % S e A A a e A % S e A B a e A I

5 1/2 i i A e x 30 x U I t ' d a - " ) p 9 n " X 9 " Y Y B A " " - ' d H W e A d o « - a j I

6 1/2 < E . I o a < E N A " o o i a 5 s a e A . z T M " D a 5 K o l < A " N ÷ o O o i E O u u "
2 o ? @ I " T M u u y o : i " e s ? @ ' a @ P Q " p " H W y i I ) z T M . a 5 I

[ Y u ' " ]

1 1/2 u a e < E . u " © " z T M z < E . " e s n u i u " ) z T M z T M u P a - u n
< A z T M o " 2 P n u I

2 1/2 ? @ u ' p 2 S u I S > e : i e : © D Y P n D L " T M o Q 1 E 1 ? @ n 3 B a
a O O I t a B I S > e : K E K " ) u p ~ n a a E e i u a a i T M P B S I

3 1/2 " % u © I D Y i " u s I " ÷ o « - 2 ? @ @ O E • " y \* + u I

4 1/2 z T M c A A A e j d n z A A 3/4 E A A u \ A e < A I a c > O n t ! " ? @ ' a # i I

5 1/2 u N A A C E E 1/4 " " N z h u E \$ " , % " t o e A A & ' 1/2 A A O o 1/2 T L M ( " " 2 < A D
% S © - n ) \* I

6 1/2 + Z t ^ E q z t ^ " , - . o / . q z t ^ " < A " N V u J B " z T M n % S , x o O 1 , x © 2 a
" z © U % S - i

7 1/2 ÷ o z T M w x u " ( L M K 3 < A I " t ^ 4 A E 5 . z ! " ? @ ' a # i I

[ 6 e 7 8 ]

1 1/2 1 ? @ O n E O D < t 200ul a a a e c A E T M 2 2 9 " ! : . D Y O u E X 9 ; 10 a [ " s . O E O D
A e x " ] < T M a < 6 e I

2 1/2 < a e a Y o Y P O 1/2 S B O 1/2 O ^ O I o Y P O 7 O " { B < t 100 N L @ g e : n Y P B x < < E P D 2
U I O ^ O < 100 N L Y P B a a A e x < < E P D - = 7 3 . o U " 4 O < S B x E a a . n B U 100 N
L " E O < 10ul Z a " Y O < E U U " 3730 Y O u 9 n 1 E L " I > ? o 5 N 800rpm " @ 2-4mm "
A B Z a - 4 I

3½ÉŽ " 2ä [ . - Æx " Ž ( Cñ&'™ÖÈ" ©™i í Ĩ  
4½ÉÖ< %ŠèÆAå eÆ100ÑLx «™úāj Ú" ÝÖÜÜ" 3730 ÝÖ ù9ñ1€L" Í >?ò5  
N800rpm" @2-4mm" ABŽã—4Ī  
5½ÉŽ " 2ä [ . - Æx " ÉÖ™200ÑLñì í Æì í " DĐ1-2ä [ " - ÖĐ" ÆxĪ qai Ö3B  
Ī³. ° Bì í . " \ÉÈ- 64ñì í æçÆ" 1 ÝÖEFD GÉ" 1H DÖĐñÆxWó È  
Ī †Kö„ <Ī Ī Ž ì ÖI J HsĪ  
6½ oŽ " ÉÖ< %ŠèÆBå eÆx «™úāj Ú100ÑL" ÝÖÜÜ" 3730 ÝÖ ù930ä [ " Í  
>?ò5N800rpm" @2-4mm" ABŽã—4Ī  
7½ÉŽ " 2ä [ . - Æx " ÉÖ™200ÑLñì í Æì í " DĐ1-2ä [ " - ÖĐ" ÆxĪ ì Ö3B" k  
—g785Ī  
8½ oŽ " ÉÖ< êÆ150ÑL" ; 2ä [ " ž•' K• £&' " ] <ÉI LÖĪ  
\* +œ  
1½< ÆPðœPð° B?@" î ...ñ Ý; " ÈĪ ñ<M• ÖÖÉ=™" §! " \$8Ý ĩ ...A( " 2ð™B  
ž™Ī  
2½< œ?@6eĪ ) ž™° B• ñNO " ^\_ùúĪ < L\* +@... PĐJš" 1 B<ª ÝÖÜó  
" /° ©QóÖ• " ÝŸRĪ BĀĪ V`´ < Æ< t° " < KöÍ ° FÖV³. ° FÖ< LMMS/  
° €x° TUj D10ä [ 2ĐÚ" †ª V° " 1Ī ! " ©gñW² 9ñXLM" M¿ YZ±² - Š° ĀñP  
Q• óqa• ĪN[ ŠĀñPQ• " ½¾ò5aÖ« -?@Ī  
3½9ñœNAB B \ " ?@L) 1< ÉÊÊÜÜñ ÝÖ5ª 9• Đ" 2^\_Æx \ " ì Ö. ´ /O« -  
™76e" ] ^L\_P´ ^\_ ÝÖ'ª È` &' " gL´ abcde¹ ñ9ñLM 9: Ī  
4½ì í œPài í f gq..." DÉBì í KöÍ " P...1ì í ÆHWÖÈĪ †ª ž™Ī Ī ì ÖI " ) Dhi ž™  
. ò™ª j k?@KöÍ Ī  
5½†ª ?@XĐ9:ª 60%" ½¾ž™< 9ùù 9: Ī Ī

[ ?@- " ]

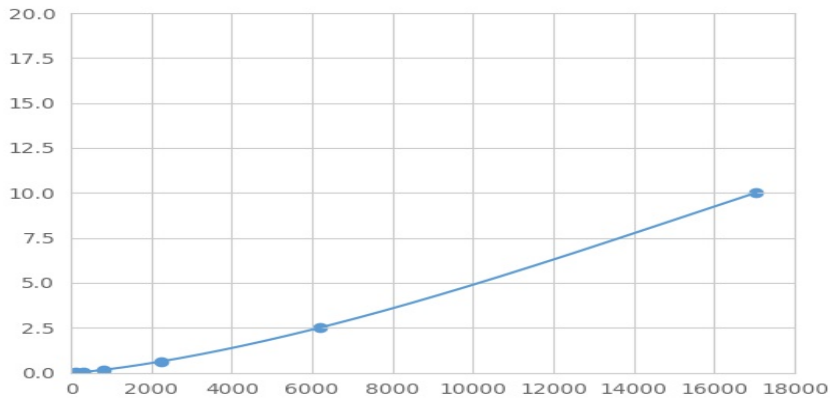
1SUM01, x Ùª Ž••' mn" j sofp x" q•' Í äÝ< tÝPBÊÝµ" ÈĪ SUM01Vr ĩª ofp  
xÈñ, x´ s" Z. < tš>, ÇñSUM01, x" D1 ´ sñš>, Ç, xĪ ø. " < tPEÝtñu , " PE  
Ùv\ . " à | MFIĀ x Median Fluorescence IntensityŪñ° € BĪ ñSUM01è: Kj f„ Ī™Luminexă  
ăöŠ¹ " áâ Bè: Ī

[ áâ ]

wÝPBó µMFIĀFoØ^ ÖMFIĀ. eÒxxyòÚ" †ò5aÖ" z´ \ÉI #ĀáâĪ 2ÝPBñè:  
N{ | ÝxÉ Ö| ÝÚ" MFIĀN} | ÝxÉ Ö| ÝÚ" ~-ÝP x³ kök´ {• €köáâñR2Ā  
J¹ " 2R2Ā• , fª 1NýŪĪ ½¾ž™„ ...j e †Ç« -ăă" †curve expert 1.30" à | BMFIĀ"  
ÝP † f´ ñè: " ^ 2àáÓÖĈÉ™ÝP> ñè: VMFIĀáâ-ÝP ñ• €kök" 1 Bñ  
MFIĀ%t kök" áâ- Bè: " ò^ 2àáÓÖ" ] N Bñ?ăè: Ī

[ Ši Ö| ]

N[ <ª áâ" / è: NĪ 5° ĸ MFIĀN" 5° " » ¼~ÖL 7T™ÝPBñMFIĀeN} | ÝxXĈÚ" ÝP  
Bñè: N{ | ÝxYĈÚĪ gLN[ < @´ª ñ¥•• " ÖĪ ù€ñR- ŽÖ| ĸ f ÖĀĪ ½¾ž™ ÖĀ÷  
• ÝP ÖĪª ?@6e; Çñ©gxt6e ½ Æ•' ½Ī Ö•' 9: ; Ç( Ú" ÝP ñMFIĀĪ  
" í´ Ī" ù€ñÝP Ç£" " ?@ î ...à | ĪĪ ñ?@÷• ÝP Ī



(€• , f „ ...† ‡ ^ 1)%Š< €• ÝƮ

[ %Š ]

0.01-10ng/mL.

[ <sup>3</sup> %Š ]

± ÅN20F Ø^ Bx] ÝƮBà áÆÚŠ¹ ñl #Å< =ÓÝƮí " ´ ñë: ï

[ ' • ]

µ< €• <sup>TM</sup> a %ŠSUM01" • %ŠVĚĹ f• > O- Y-~`´ï

<sup>a</sup> <sup>TM</sup> - • ' ó µJšñ"j " ©<ÅHs" f„ Êf• > O-~`´ %Š" " ‡µ< €• <ÅV • %ŠñĚĹ > O -~`´ï

[ êŠ: ]

êŠ: <sup>TM</sup> BŠ¹ Åñ5' > ÔCVm' ĩ CVx%Ú = SD/meanâ 100

œĐí œ\gœB< €• ½Í ½ Å¹ Å µ« ¬¹ ° %Š" É• µr ž Š¹ 20

B" äÝáâ@gë: µñl #ÅóSDĀĪ

œMí œ€\3F ©gœBñ< €• äÝ ½Í ½ Å¹ Å µ« ¬¹ ° Š¹ " ÉF µž <sup>TM</sup>g° < €• qaŠ

¹ 8B" äÝáâ@gë: µñl #ÅóSDĀĪ

œĐí œ CV<10%

œMí œ CV<12%

[ S¹ • ]

• Š¹ " < €• D ³ ĐŸ \$½¾9: ( " • 4 ? 1€<sup>a</sup> 5Ī

Nj €¥ó" , < €• φEú. %ŠÅñ±² " ?@Xñ¤¥; ÇĪ /° ( C° " " ; ĚR?@XD9: ½9

: ó9ñ; ÇĪ ĚB g° ?@ŠJ « ¬6e<j " ©Nì í Ī

[ ?@<sup>a</sup> ö ]

1½? @úÝƮB½< €ó µƮĐC

2½< xÝƮBĚ µÚ100ÑL" < Žã" 373C ÝÖ ù«ñ1€LC

3½Ž ÖĚ" < %ŠèÆA100ÑL" 373C ÝÖ ù«ñ1€LC

4½Ž ì Ö3BC  
 5½< %ŠèÆB100ÑL" 373C Í « ñ30ä [ C  
 6½Ž ì Ö3BC  
 7½< èÆ150ÑL" ; 2ä [ . LÖi

[ Ÿ ]

1½ ° ; Çó¬ • ' l - ©Å £y@ú£ñ" " - " « ¬Wññ° 1 Väå" µJ B<Å D°  
 1 ñO° • ' ±²İ  
 2½³³ ñ?@´ª V< £ñ • ½?@ ñf„ 6e2ó?@¤¥\$rf„ ") Ÿ ÞðÞ ñÝµð•İ  
 3½©gæBñg° J B<ÅI " ´ í Ÿ" †æ%Š" ½µ¶: ") { | < £• ÐŸ j « ¬?@6e" . 1  
 " ±Ÿ j £e" İ  
 4½µ< £• ā° < £ ā° ž™™ ©Åß™™É»j è@ñJ Bİ æ abcdµ< £• ñ?@Ÿ ¼l £-³  
 ñ%Š´ªİ  
 5½D ó9ñKöÍ ^\_1< £½¾D¿ ÀÍ İ " < £%Ê ÊÁ2AB \ • š> ùú" " N±^ Å  
 ñÊ\$1! " ŠÃ©ÞQİ  
 6½Ã Ãñ ÄÖÖÖİ <ÅI " ´ > O" †Nj g° Å" ©l ?@´ª ës] ^±²İ ŸÖDž™  
 LM vÆÇ\ " ") î úú\ " İ  
 7½ ° 6e ©hi ½6eÈì Êÿì €™LÔööÉ( P <Å! " ÿì ´ª ñJ šİ ?@ú) ÊÂËŸ  
 j ýl < öüİ  
 8½D µj ð2ó6eñÉFKöÍ ñ5£P<Å! " ©gñ?@´ª " " 2N[ ú ?@´ª ñ<qa• " ?  
 @ñÊ° 76ePî ...abUj İ  
 9½< £• D´ l ú#• KabO%™™ Î ´ª ¶İ ; Çów?@X; Çí " " <ÅI ës?@´ª V´ l ´ª ©°  
 " Ê©gæB< £• æMí Ð° ñ) \* İ  
 10½µ< £• VÊ»Í Nñgh< £• Ê©gk—%Šg° } ñ> ñJ BÞ %™™ " 2©Òo%Š´ª ©° " ñ  
 ) \* İ  
 11½™ª j ð< £• Í , æñ\_Ó- ægNq¿ †^ " İ ´ª ðq¿ †^ " €\ñÔÄ½mÕ> Ö½÷ £kk(  
 w ©g " " 2»¼—( Öž < £• <™ª Ê» q¿ †^ ñ%Š" æg»¼„ ©÷øž™™ < £• %Šq  
 ¿ †^ İ  
 12½) ² x BÍ Š> ñè: " Ê òá²?@Q¹ B%Šè: İ Ø ñ' " <2AB µí %» İ ° •  
 ´ < £• %Š İ  
 13½ž < £• <Å©™™ª ° ?@µ • ©Q¹ ñ Ù?@ Bñ%Š" Š†" 1 " Úo?@(İ  
 14½µ6eŸ g ~™ª 48T< £• İ  
 15½ž < £• ££| §ž™™ †1Ê™ª « ¬- ®Ê] ^Ê»™™Û" » 1© " †J šñÛŸ " Þ©B  
 à] ^—á ] İ

[ ÜŸÅâ ]

ÜŸ	<Å- "	Åãkä
ŸÞ í	ŸÞÞðð©j Q	« ¬j QñŸÞÞå: àá
	\óì í ©Pä	Þäñ \óì í
	Æ©èQ	%‡ j Æù

êš:	Žāì í ©Pä	\$Ÿ ĵ ...APä; ì í DĐ
	βÁ©Pä \ < Œ©	PäβÁ \ < Œ
	qa>™ ½Ñù ÒÛ	ž™< ù...æçwñ ½ž™ wñÑù ÒÛ
	< ©êQ	%‡ ĵ Œù
MFİÃ	ÉŌ< ñ< Œ° ©êQ	ĵ Œù¨ êQ< t < Œ
	9ñLM©ĵ Q	(ŌP ñ9ñLM
	9ñ9: ©ĵ Q	< Œ...l „ X9ý (ŌPQñ9 ñ9:
	PEÝ t > È	æç< Œ
	PEÝ t > à á Ó Ô ©	\$8Ÿ ĵ ?@6e
	• ¨ LŌLMLŌ	DŸ ĵ ½¾ñLŌLMĐLŌ
μÃ	©ĵ Qñ μ k k	ĵ Q μ¨ ž™wx μ« ¬ ?@
	©ĵ Qñ μ, U ' " k—	T\ĵ Qñ μ, U ' " k—
	Š> OD μí î °	ž™wx μ¨ qa?@